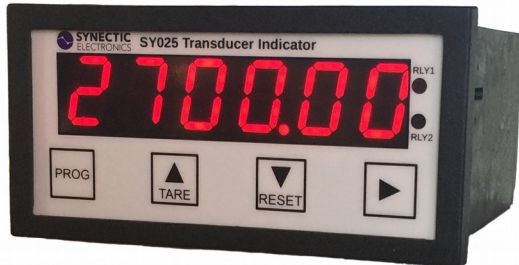


## SY025 Transducer Indicator



- Large 6 digit LED display
- 2x Set point relays
- 4-20mA output option
- RS232 or RS485 communication option
- mV/V or 4-20mA input
- DIN 43700 standard enclosure

The SY025 is a 24 bit panel mount weight indicator. It can be used with any transducer that gives a mV/V or 4-20mA output and provide 5v excitation for upto 4 x 350Ω transducers. Housed in a DIN43700 standard enclosure, the unit has a large 6 digit LED display with a range 999999/-99999. Calibration is done by simply adding a known load and entering the value via the keypad. There are two supply options available, 16 – 30VDC or 85 – 264VAC. The RS232 or RS485 options provide digital communications including support for ticket printing. The printout will include a customizable header, current weight with units, unique reference number and if the real time clock is fitted, the date and time the printout was printed. The 2x 1A 120VAC/60VDC set point relays can be used for high and low alarms with LED status indicators on the front panel to indicate the state of each relay. When supplied with the optional analogue output, the SY025 provides a 4-20mA signal that is proportional to the displayed weight.

### Specifications

Parameter		Min	Typ	Max
Supply Voltage	DC	16	24	30
	AC	85	240	264
Current Consumption	mA	30	40	110
Excitation voltage	DC	4.95	5	5.05
Digital filtering	msec	60		360
ADC	24 bit, Fully bipolar, Sigma-Delta ( $\Sigma$ - $\Delta$ )			
Display	6 Digit 14.2mm LED with a range 999999/-99999			
Relays	2x 1A 120VAC/60VDC			
Communication options	RS232 or RS485 or Bluetooth			
Operating temperature	0°C – 60°C (32 – 140°F)			
Storage temperature	-25°C – 80°C (-13 – 176°F)			
Enclosure	DIN43700 96 x 48 x 90mm (W x H x D)			
Panel cut out	92 x 45mm (W x H)			
Depth behind panel	95mm			
Connections	Rear panel mounted rising clamp terminal blocks			
Weight	200g			